

**Harbourfront Commission  
Task Force on Kai Tak Harbourfront Development**

**Revitalisation of Tsui Ping River  
Stage 1 Public Engagement**

**(Paper No. TFKT 01/2017)**

**13 January 2017**

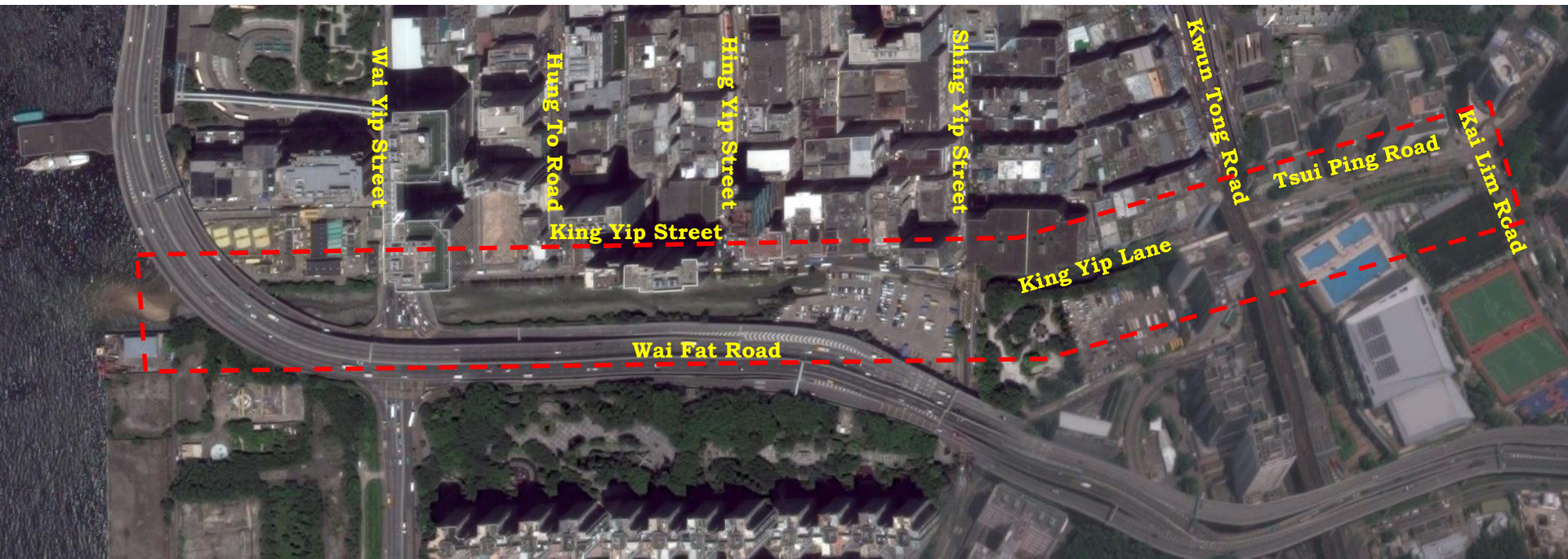
# Content

- To introduce preliminary design concepts of “Revitalisation of Tsui Ping River”
- To introduce the schedule of Stage 1 Public Engagement
- To seek Members’ views on the Project

# Background

## King Yip Street Nullah

- Constructed more than 50 years ago
- Located along Tsui Ping Road, King Yip Lane and King Yip Street, between Kai Lim Road and the harbour



## Energizing Kowloon East

- Transformation of Kowloon East into an attractive alternative Core Business District 2
- Five main focuses under the Conceptual Master Plan version 5.0 promulgated by EKEO in November 2016
  - ♦ Walkability & Mobility
  - ♦ Green CBD
  - ♦ Smart City
  - ♦ Socio-economic Vibrancy
  - ♦ The Spirit of Creation
- The proposed revitalisation of Tsui Ping River will be a key feature of the Green CBD.

## Revitalisation of Tsui Ping River

- Situated in the centre of Kwun Tong District, coupled with its inherent riverine characteristics, the watercourse is a precious space lending itself very well to being transformed into a riverside environment for public enjoyment.
- We aspire to create a Tsui Ping River that is revitalised environmentally and ecologically, and well connected with the neighbourhood, to serve the dual purposes of not only an upgraded drainage infrastructure, but also a water-friendly public amenity.

# Key Objectives

## 1. Reducing Flood Risk

- ♦ To enhance the flood conveyance function of the existing river channel

## 2. Revitalising the River

- ♦ To provide waterscape, landscape, ecological and water quality enhancement
- ♦ To provide green riverine corridor

## 3. Improving Walkability and Connectivity

- ♦ To provide walkways alongside the river
- ♦ To provide cross-river walkways and landscaped decks

## 4. Fostering a Vibrant Riverine Public Space

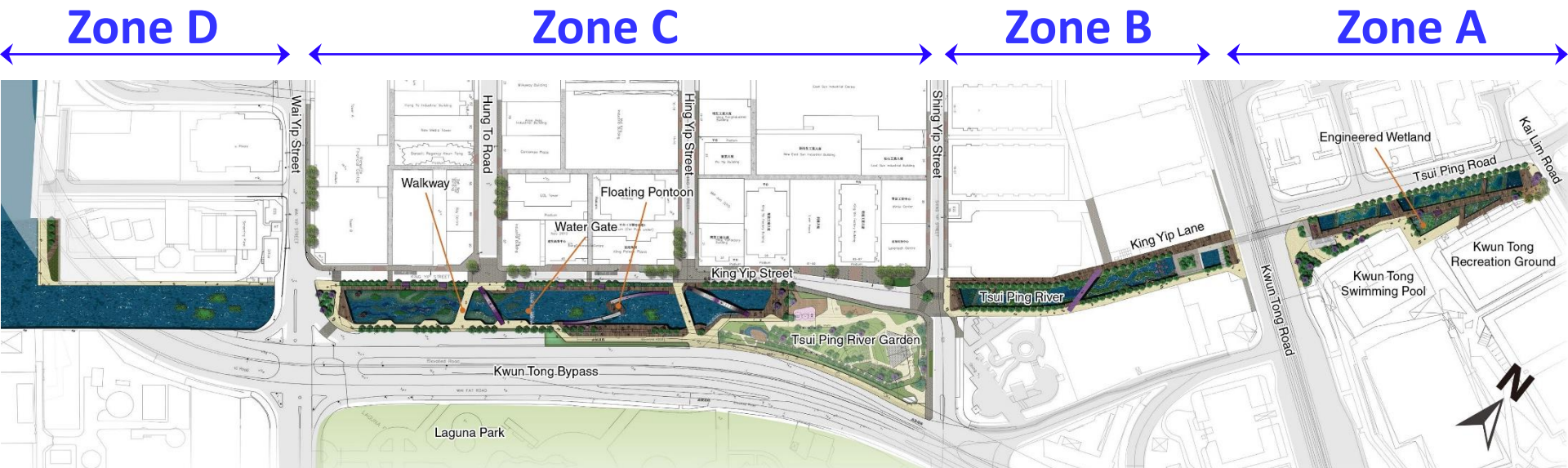
- ♦ To make Tsui Ping River a landmark where one can experience the riverine scenery and leisure activities

# Works Items

- Revitalisation of the existing River, through the provision of waterscape design and water features
- Provision of landscaped walkways and footbridges along the River to enhance walkability and connectivity
- Provision of landscaped decks over the River
- Modification and face-lifting of the Kwun Tong Road Footbridge
- Related enhancement work in the vicinity of the River



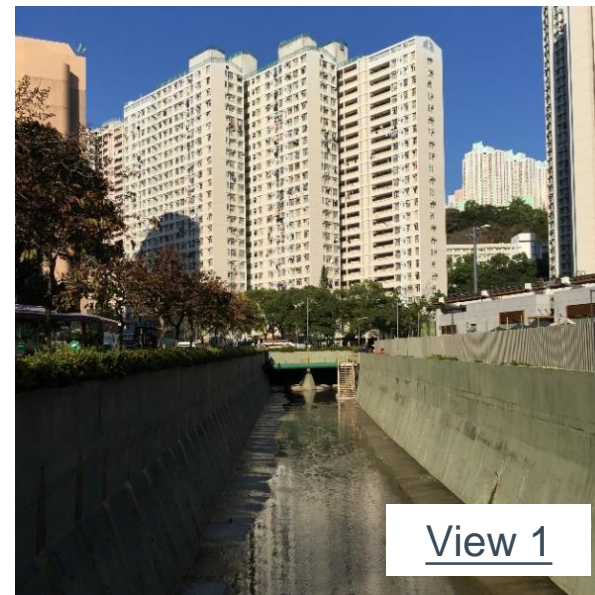
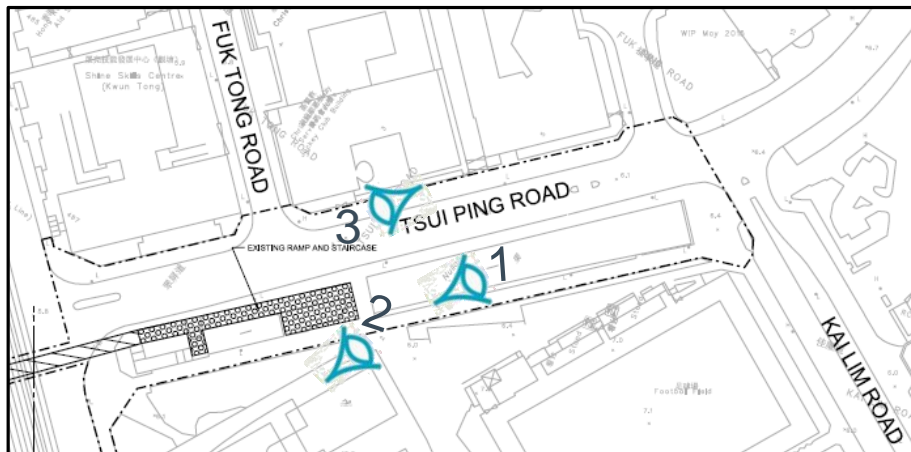
# Preliminary Design Concepts





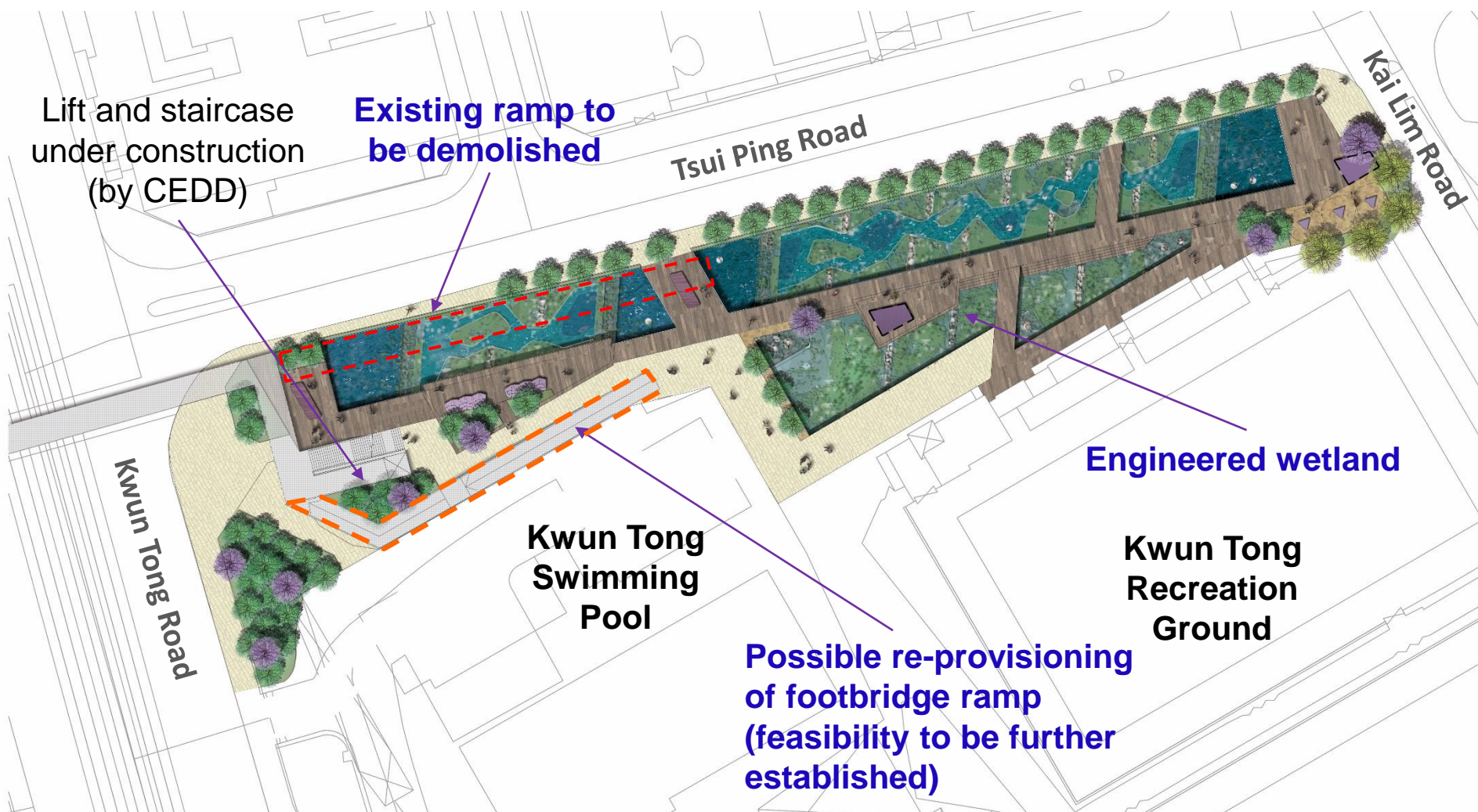
# Zone A

(Between Kai Lim Road and Kwun Tong Road)



# Zone A

(Between Kai Lim Road and Kwun Tong Road)

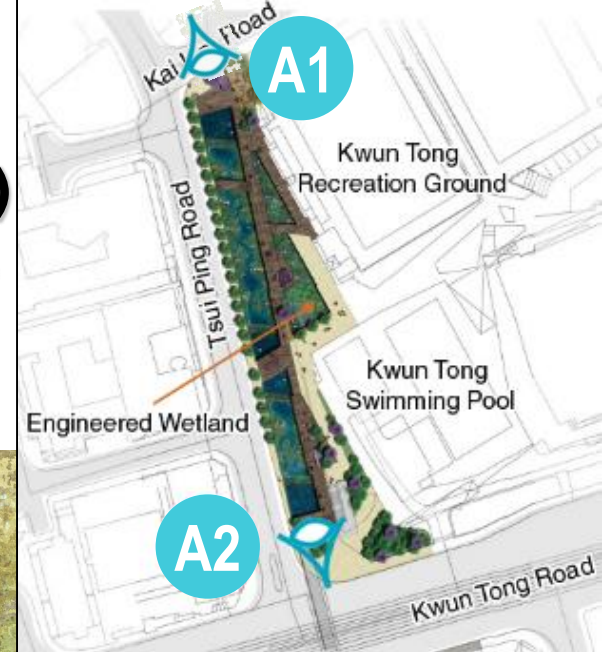




# Zone A

(Between Kai Lim Road and Kwun Tong Road)

Photomontage A1 (near Kwun Tong Recreation Ground)

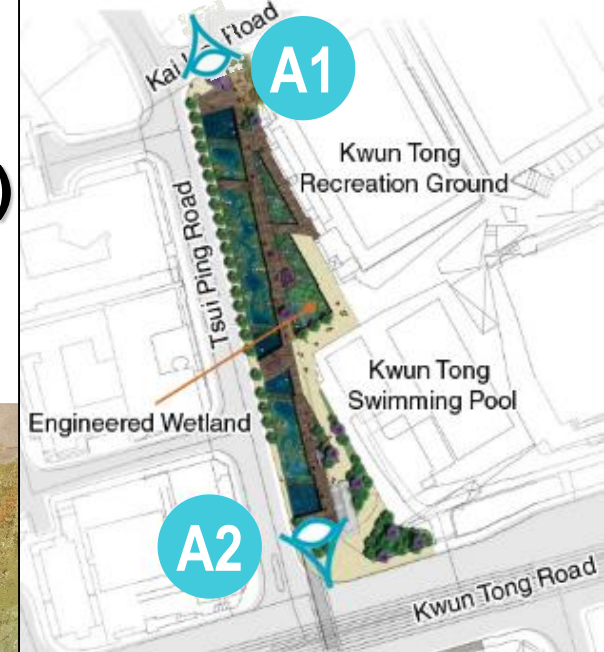




# Zone A

(Between Kai Lim Road and Kwun Tong Road)

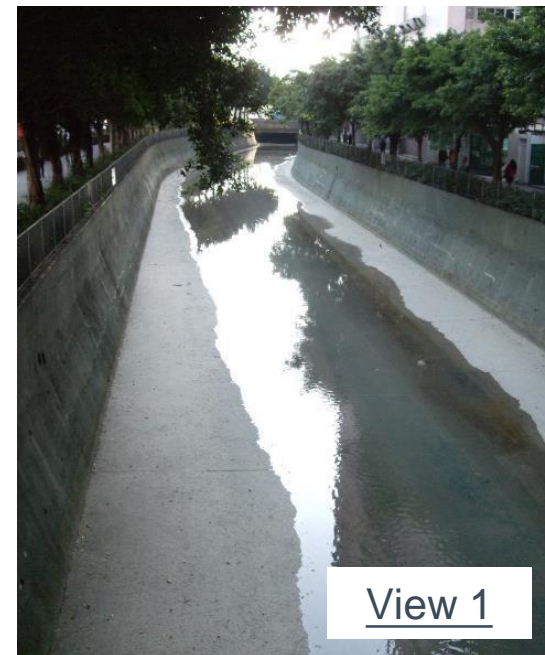
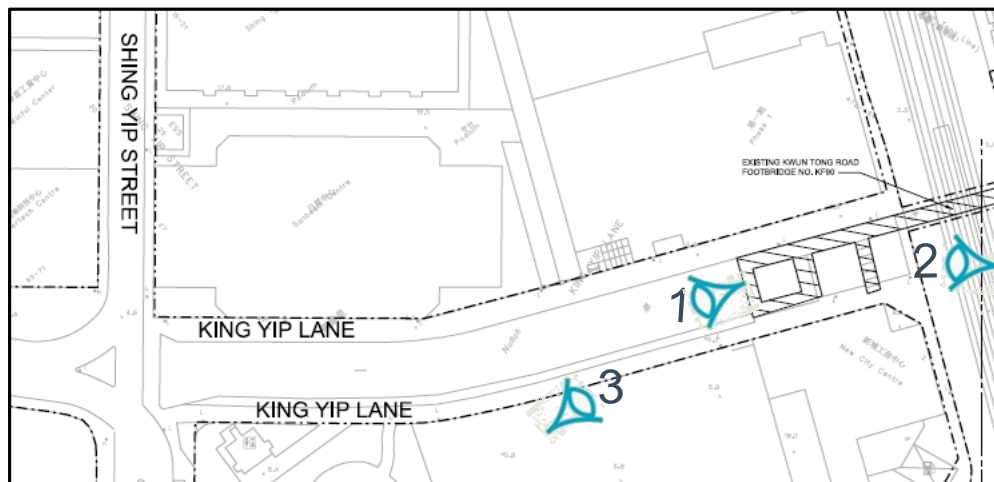
Photomontage A2 (near Kwun Tong Swimming Pool)





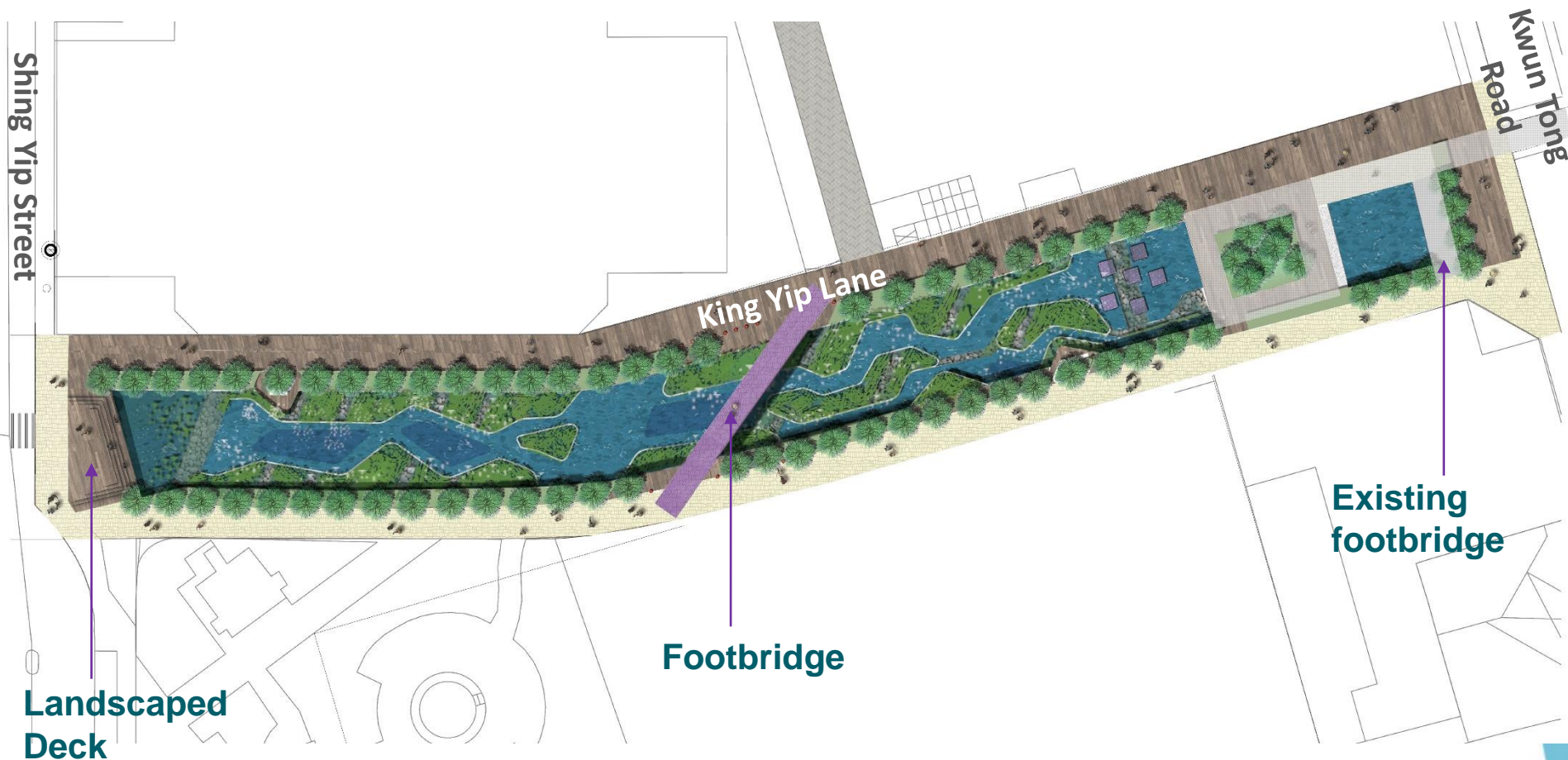
# Zone B

(Between Kwun Tong Road and Shing Yip Street)



# Zone B

(Between Kwun Tong Road and Shing Yip Street)

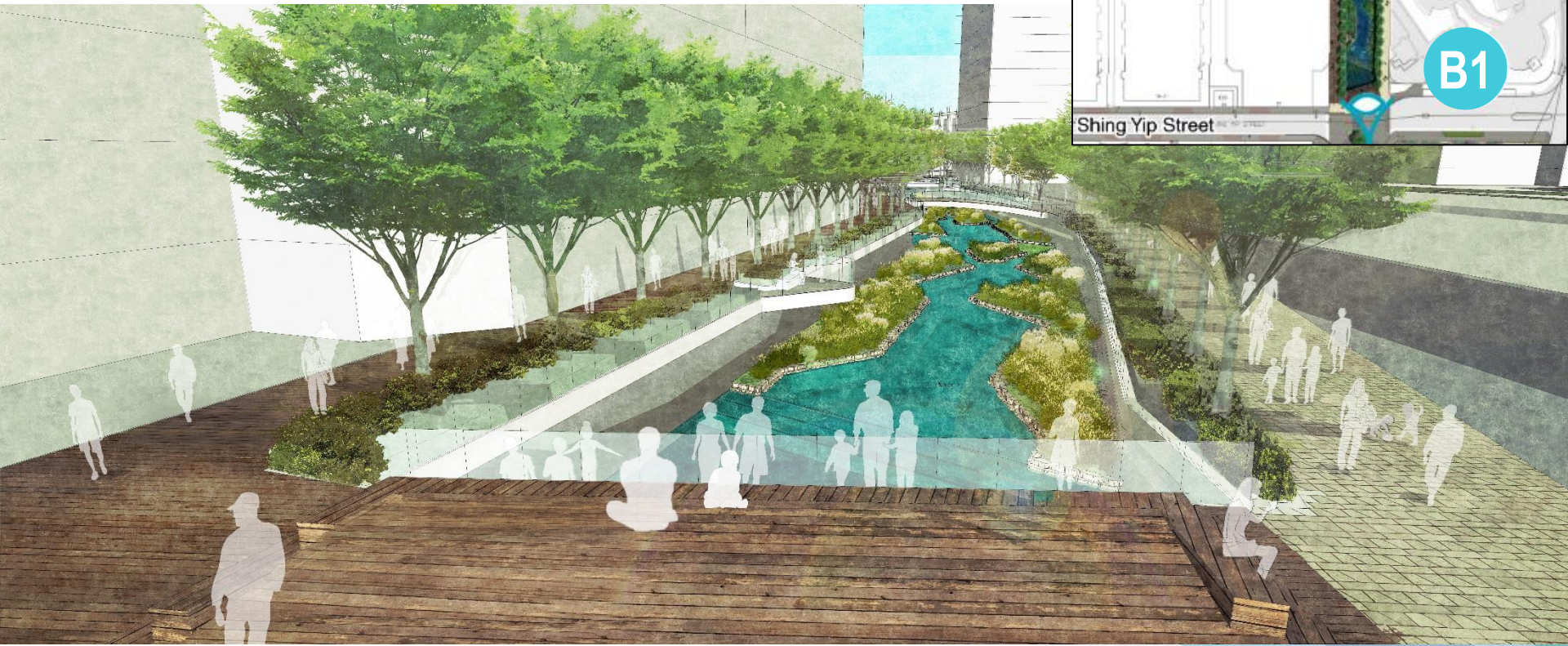
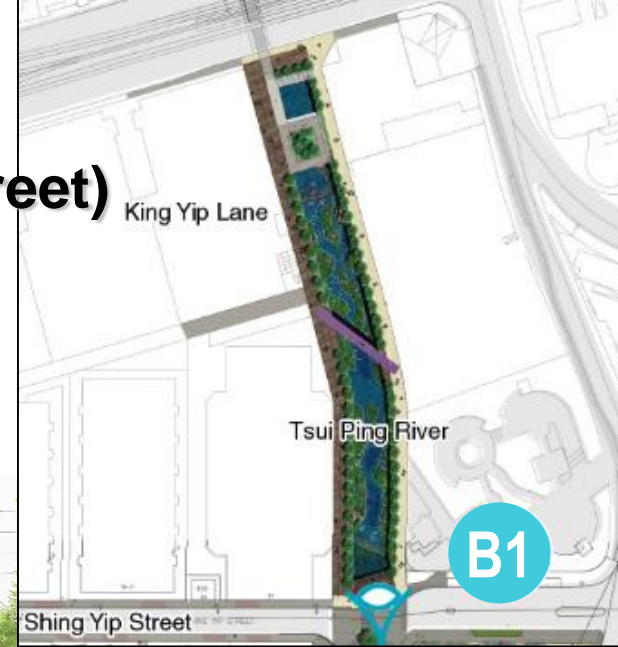




# Zone B

(Between Kwun Tong Road and Shing Yip Street)

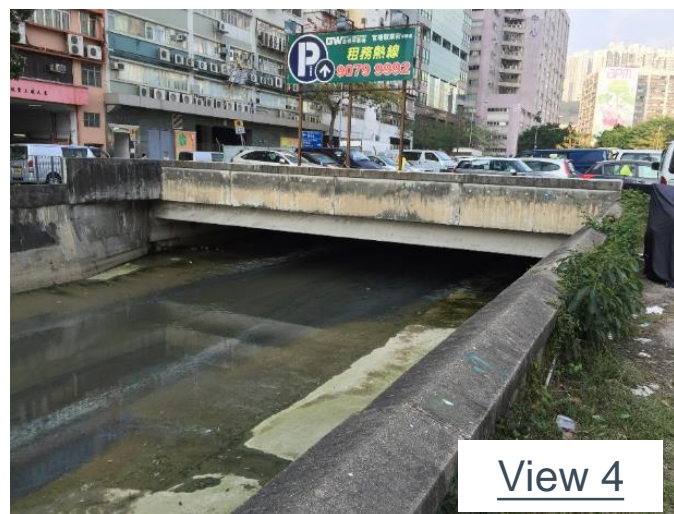
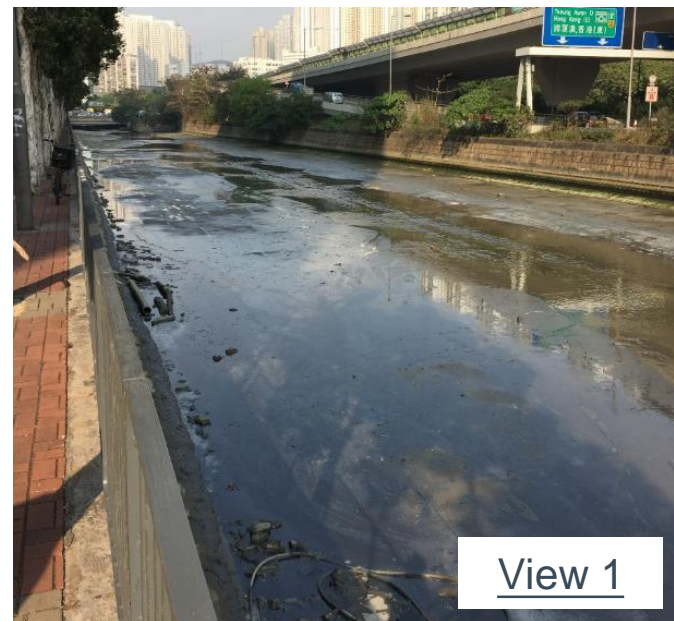
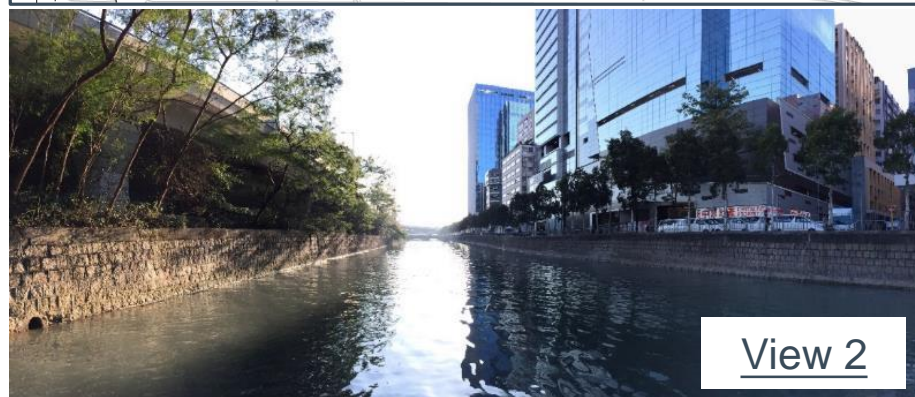
Photomontage B1 (near Shing Yip Road)





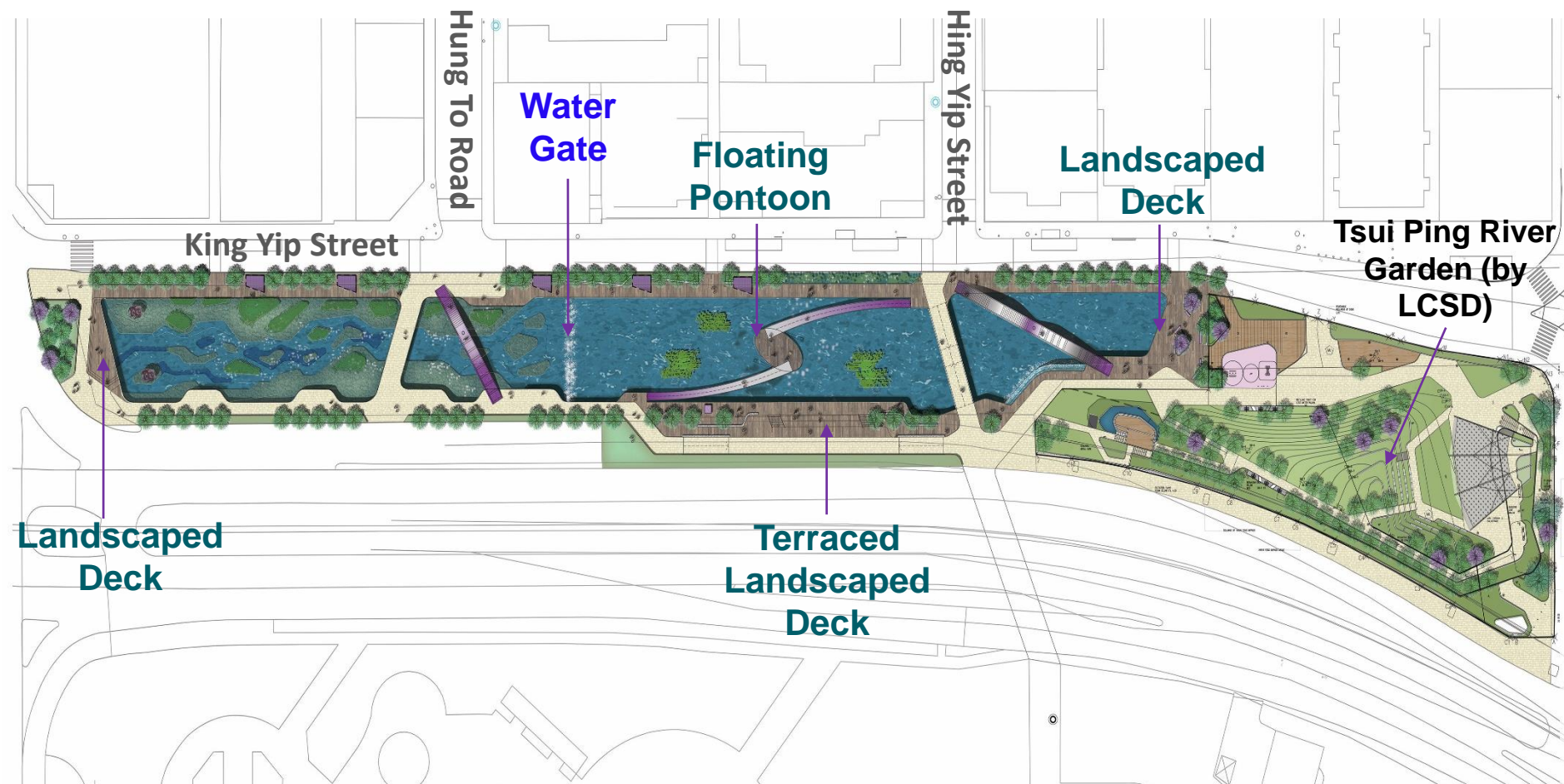
# Zone C

(Between Shing Yip Street and Wai Yip Street)



# Zone C

(Between Shing Yip Street and Wai Yip Street)

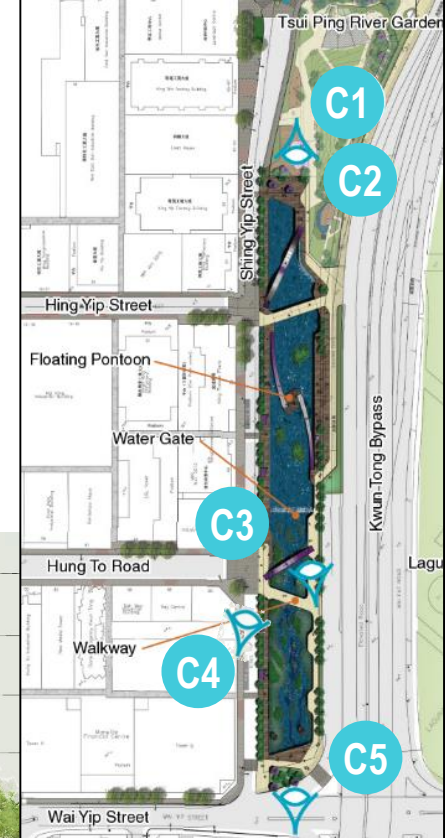




# Zone C

(Between Shing Yip Street and Wai Yip Street)

Photomontage C1 (near Tsui Ping River Garden)

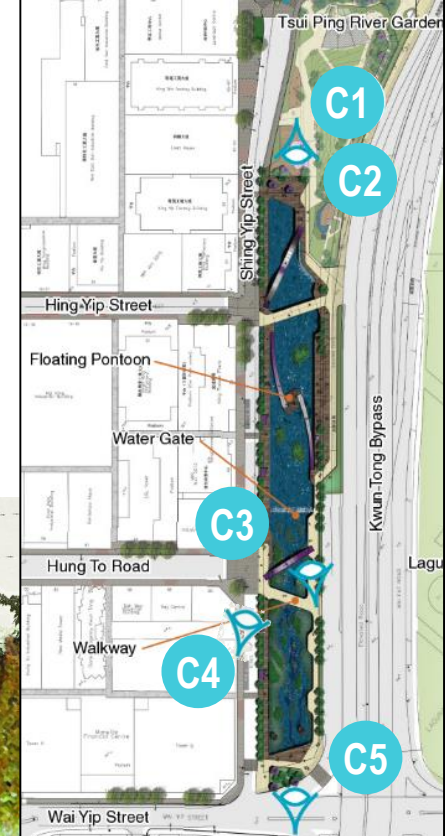
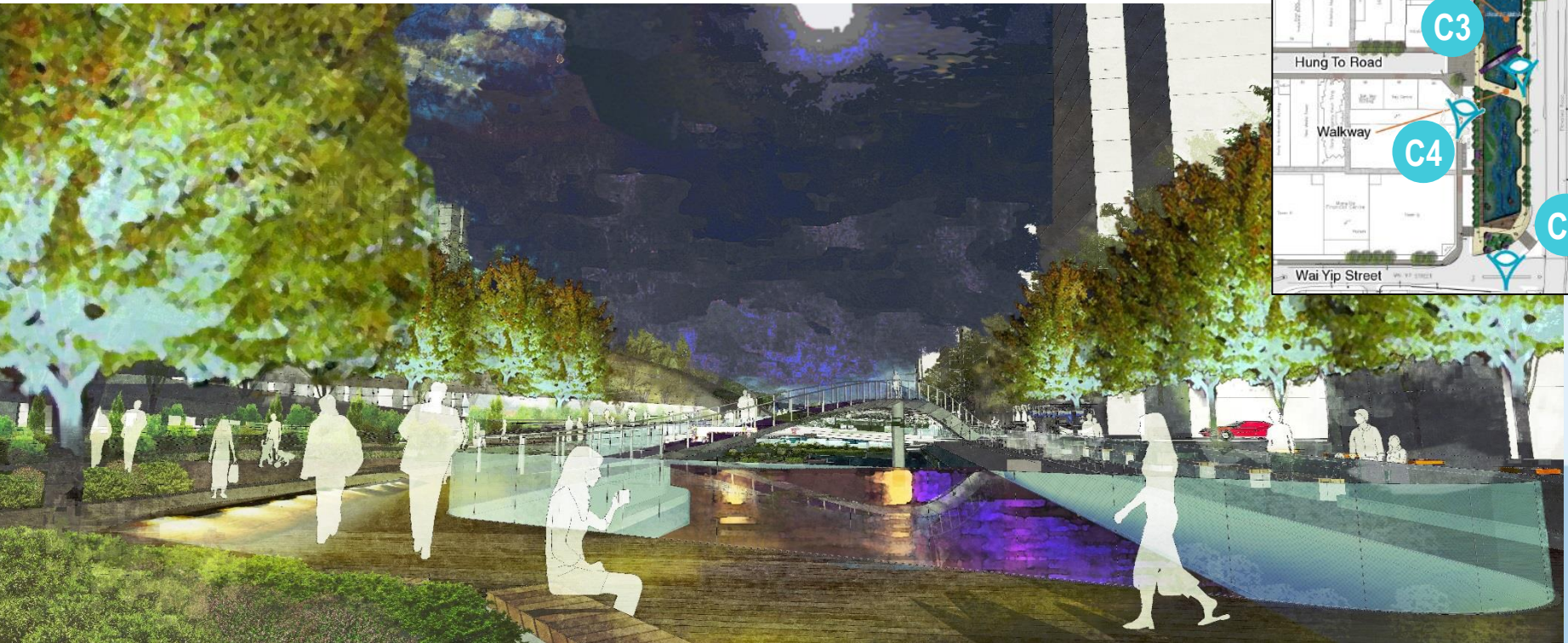




# Zone C

(Between Shing Yip Street and Wai Yip Street)

Photomontage C2 (near Tsui Ping River Garden)

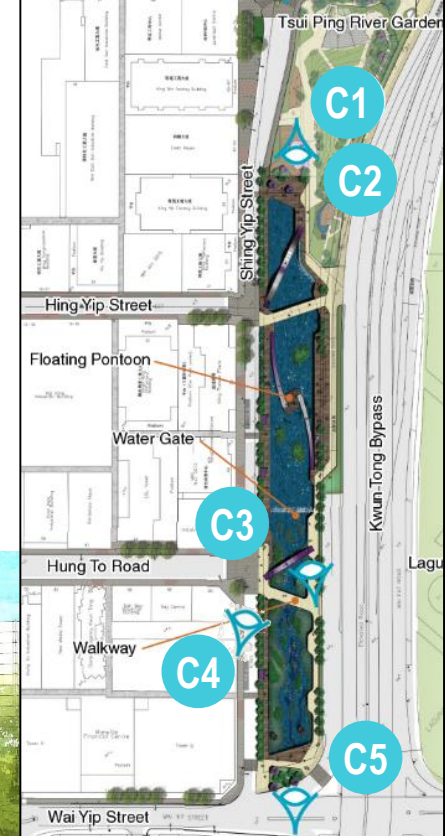




# Zone C

(Between Shing Yip Street and Wai Yip Street)

Photomontage C3 (near Hung To Road / Proposed Water Gate)

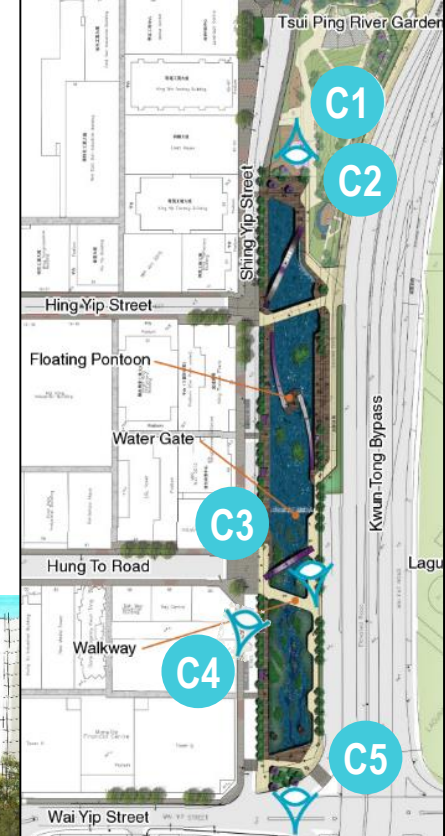




# Zone C

(Between Shing Yip Street and Wai Yip Street)

Photomontage C4 (near Hung To Road)

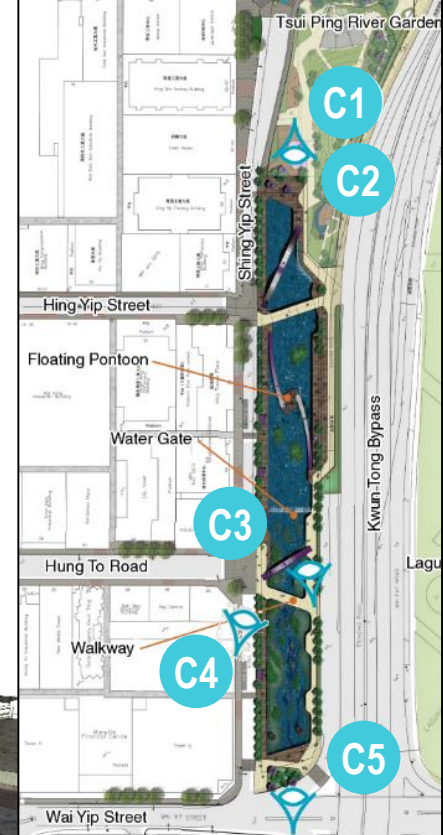




# Zone C

(Between Shing Yip Street and Wai Yip Street)

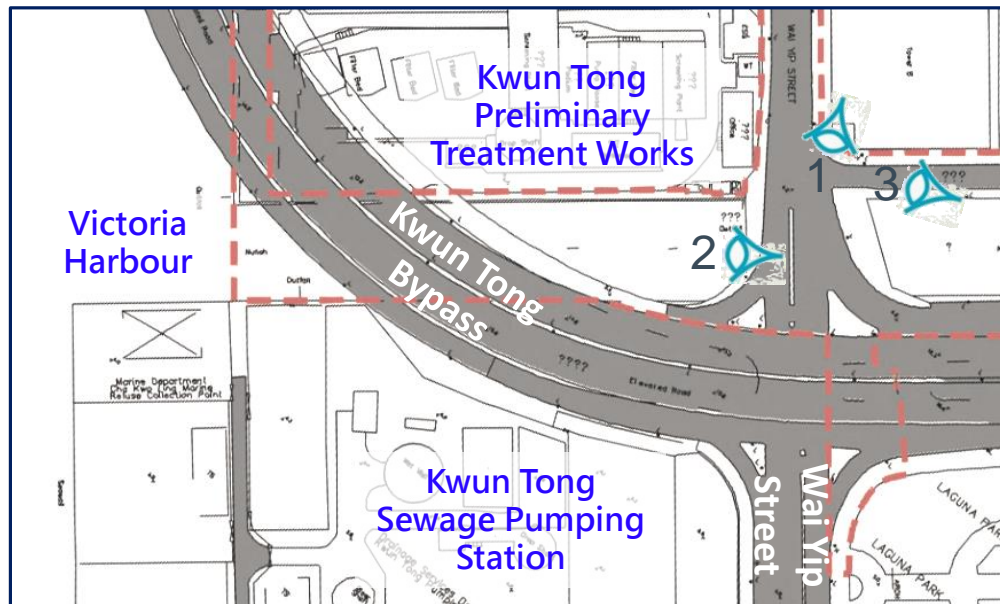
Photomontage C5 (near Wai Yip Street)





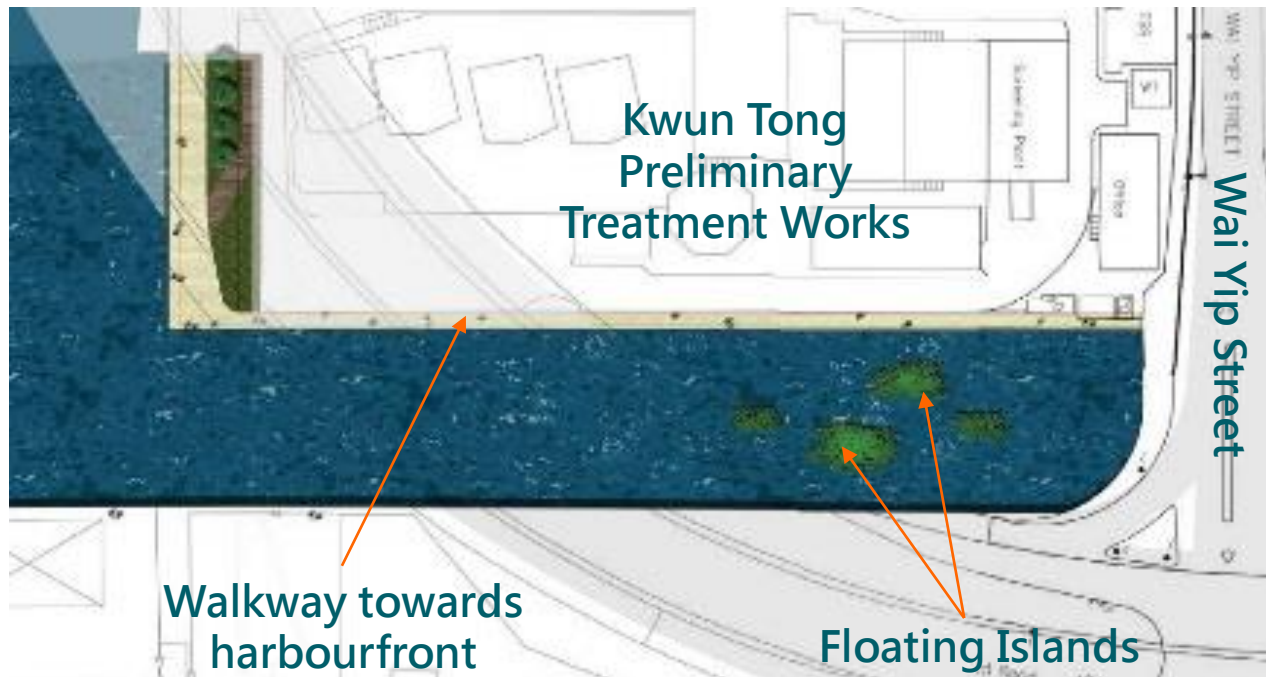
# Zone D

(Between Wai Yip Street and Victoria Harbour)



# Zone D

(Between Wai Yip Street and Victoria Harbour)



# Stage 1 Public Engagement

- Consultation with District Facilities Management Committee under Kwun Tong District Council (12 Jan 2017)
- Consultation with Task Force on Kai Tak Harbourfront Development under Harbourfront Commission (13 Jan 2017)
- Roving Exhibition (16 Jan to 5 Mar 2017)
  - ♦ EKEO Exhibition Hall
  - ♦ Kwun Tong MTR Station
  - ♦ Kwun Tong Swimming Pool
  - ♦ Laguna Park
  - ♦ Shing Yip Street Rest Garden
  - ♦ Kwun Tong Promenade
  - ♦ Tsui Ping Commercial Complex
  - ♦ Phase 1 Laguna City Clubhouse
  - ♦ E-Plaza
- Community Workshop (11 Feb 2017)
- Project Website : [www.tsuiipingriver.hk](http://www.tsuiipingriver.hk)

# Study Progress

- The Project is now in the investigation phase
- The Stage 1 Public Engagement activities have just begun
- Detailed design is anticipated to commence within 2017



**Members' views on the Project  
are welcome.**

**Thank you!**