

翠



Drainage Services Department
The Government of the Hong Kong Special Administrative Region

屏

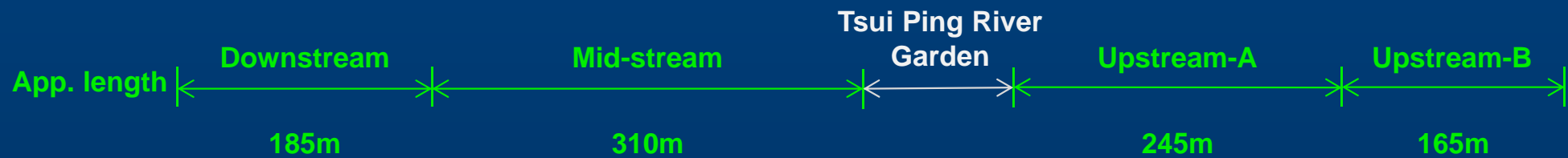
Energizing Kowloon East

Revitalization of Tsui Ping River

30 April 2015

河

Existing King Yip Street Nullah



Project Scope

The scope of the project comprises the revitalization of the existing nullah of about 1km long into Tsui Ping River with environmental, ecological and landscape upgrading. It also includes the associated works to enhance the connectivity and walkability.

Project Scope

The Project comprises, but not limited to, the following items:-

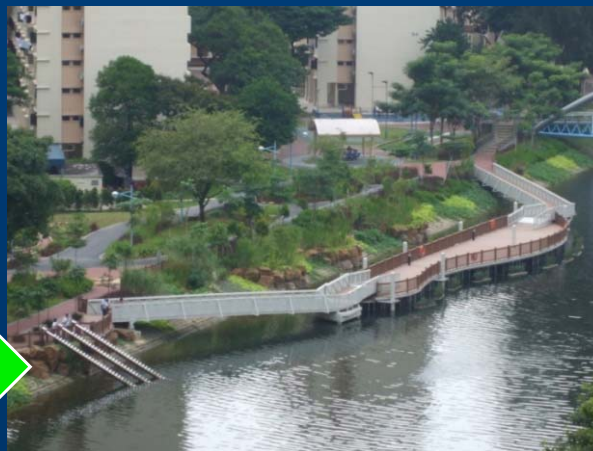
1. beautification of existing nullah by provision of attractive waterscape design, water retention features or deepening the existing nullah to retain water during low tide;



Project Scope

The Project comprises, but not limited to, the following items:-

2. provision of landscaped walkways along Tsui Ping River to enhance **walkability**;
3. provision of landscaped decks over Tsui Ping River;



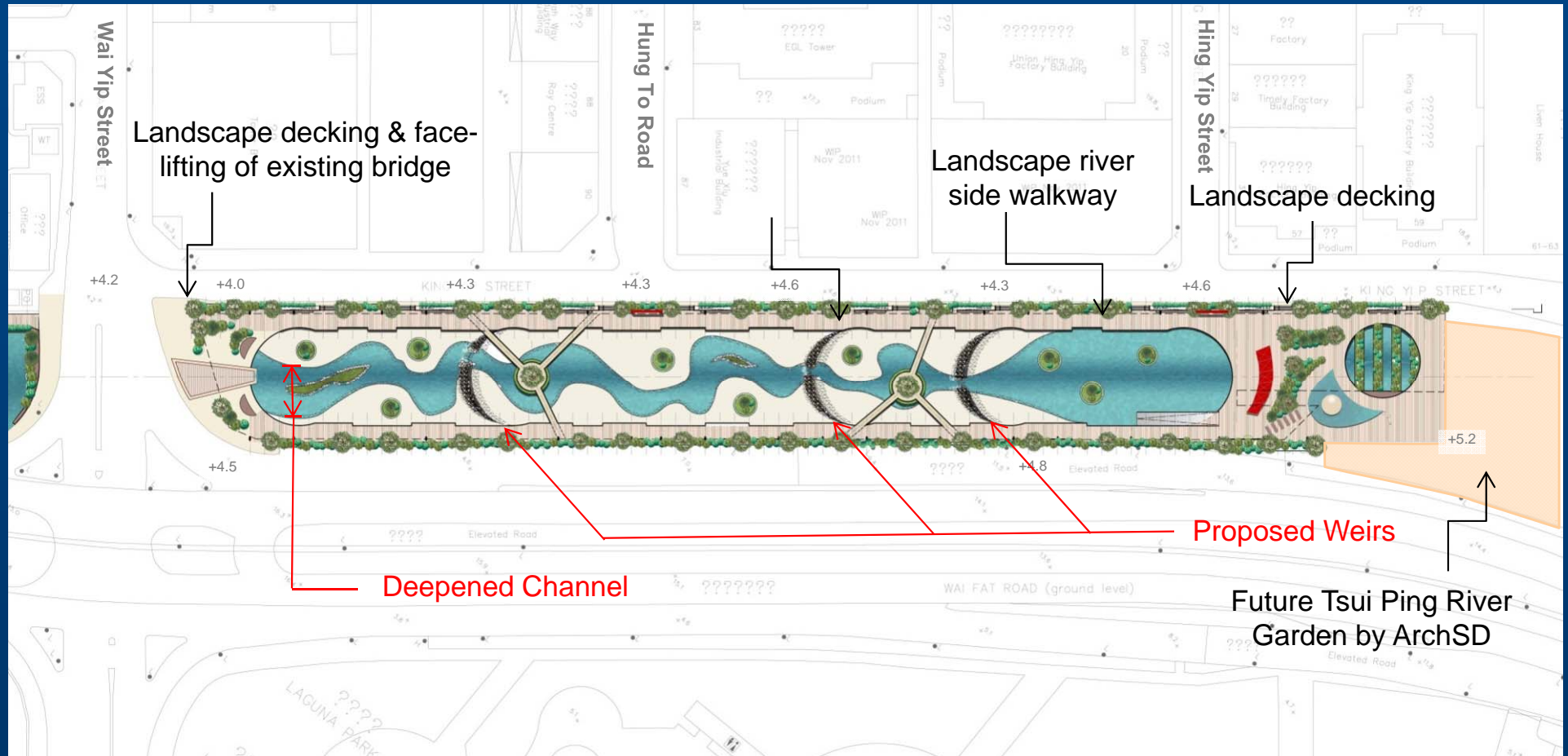
Project Scope

The Project comprises, but not limited to, the following items:-

4. modification and **face-lifting** of Kwun Tong Road Footbridge;
5. beautification of utilities crossing over the River; and
6. **pedestrian path enhancement** in the vicinity of Tsui Ping River.

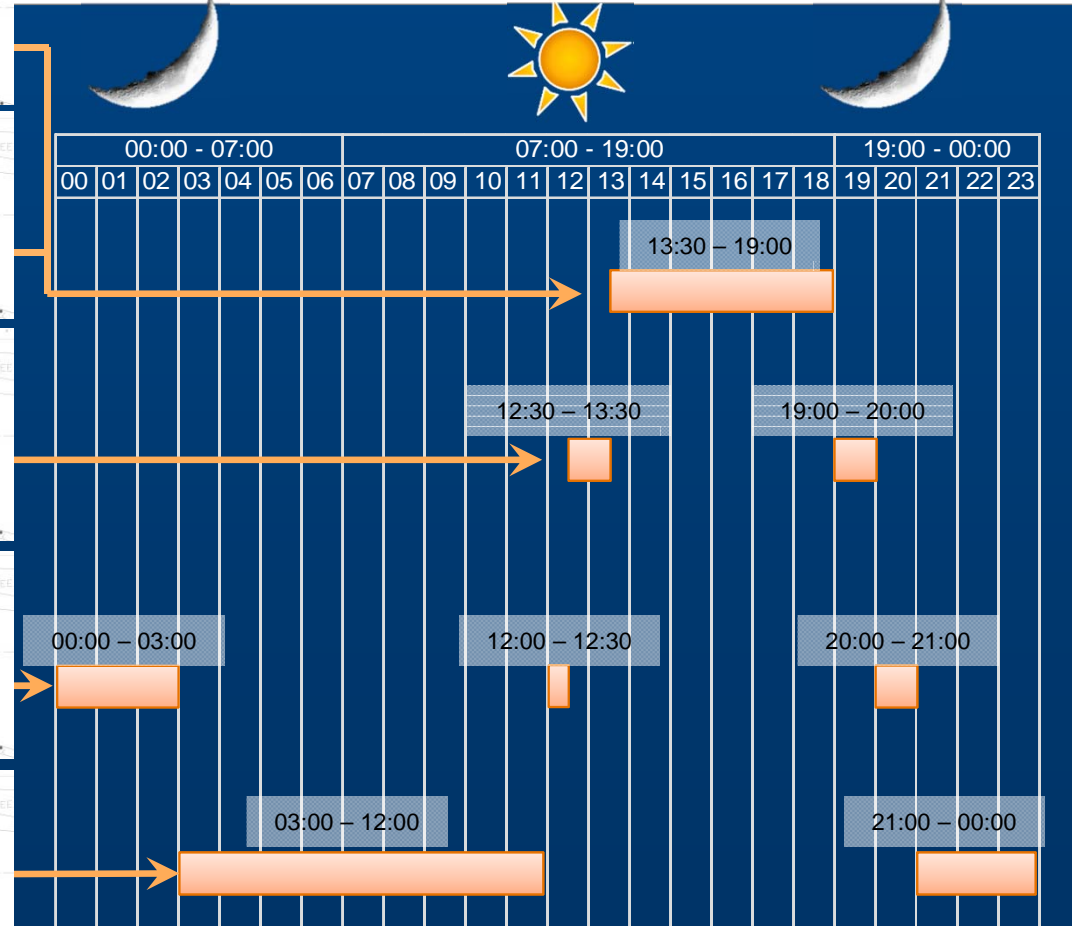
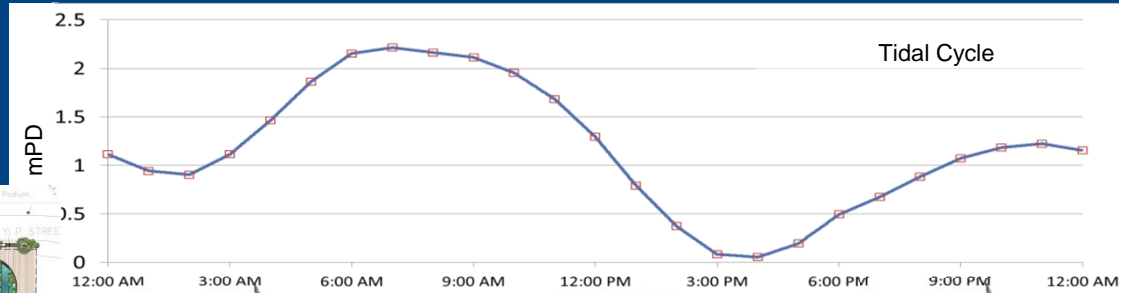
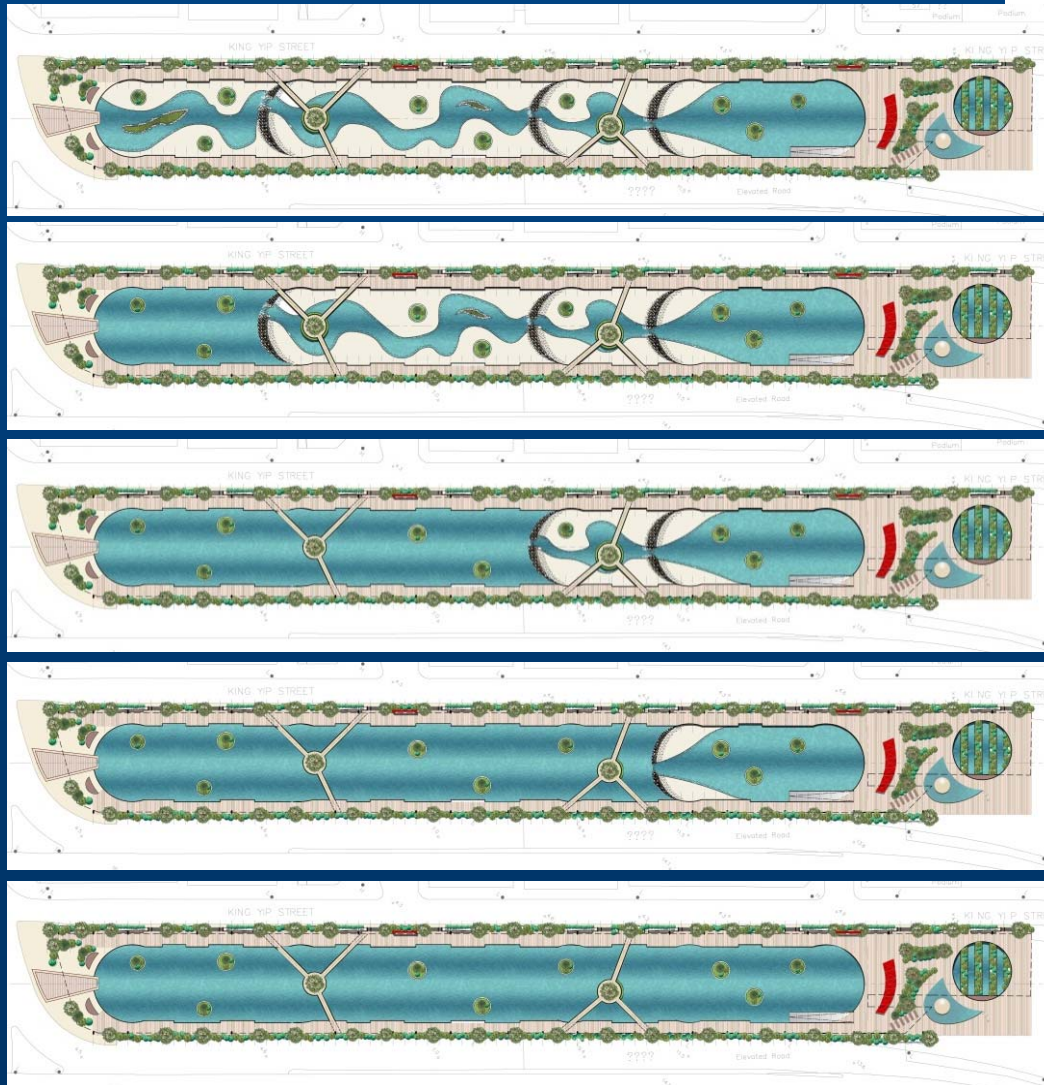
Beautification of Existing Nullah

Conceptual Idea 1 - Deepening with weir



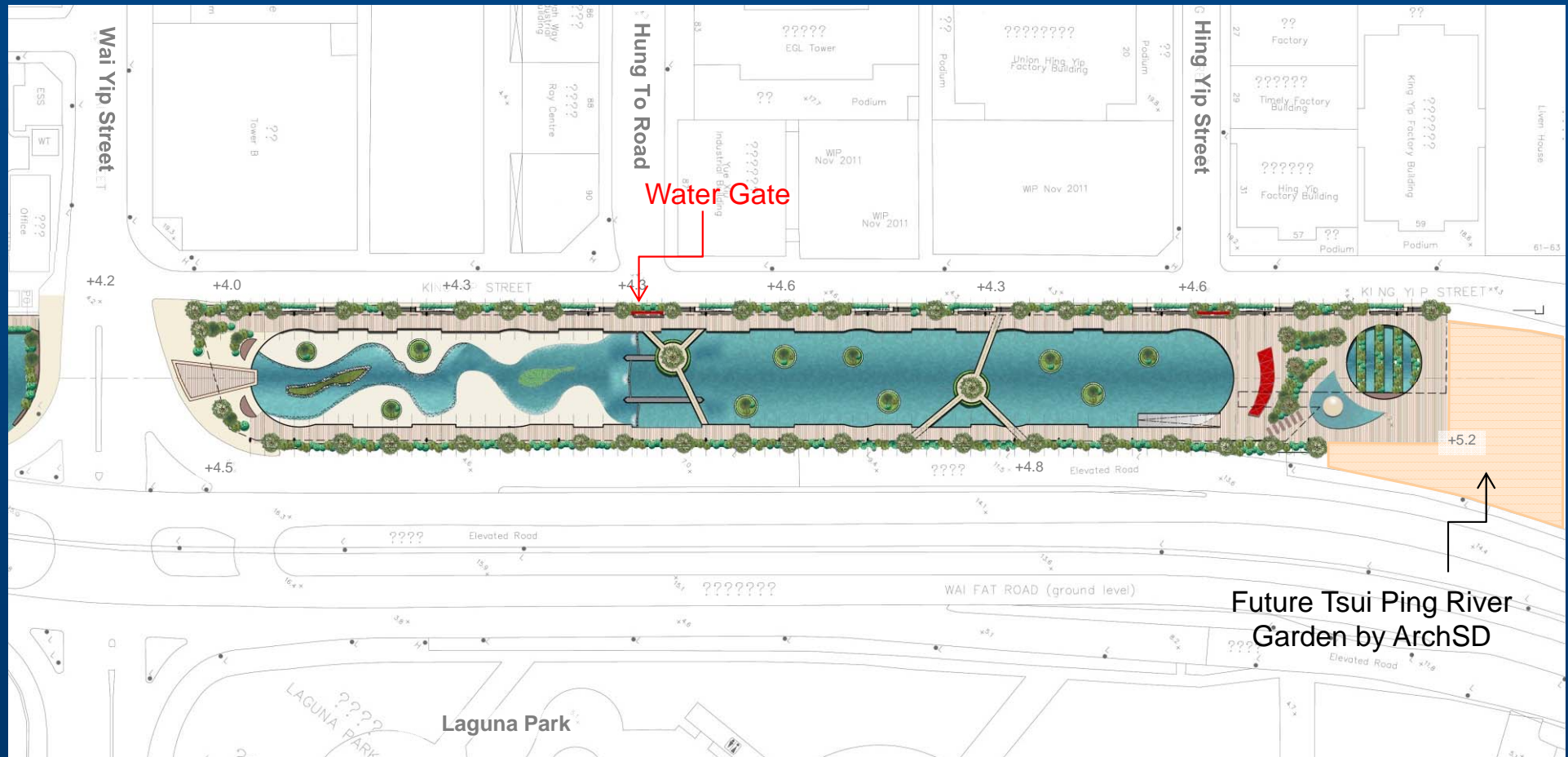
Beautification of Existing Nullah

Conceptual Idea1 - Deepening with weir



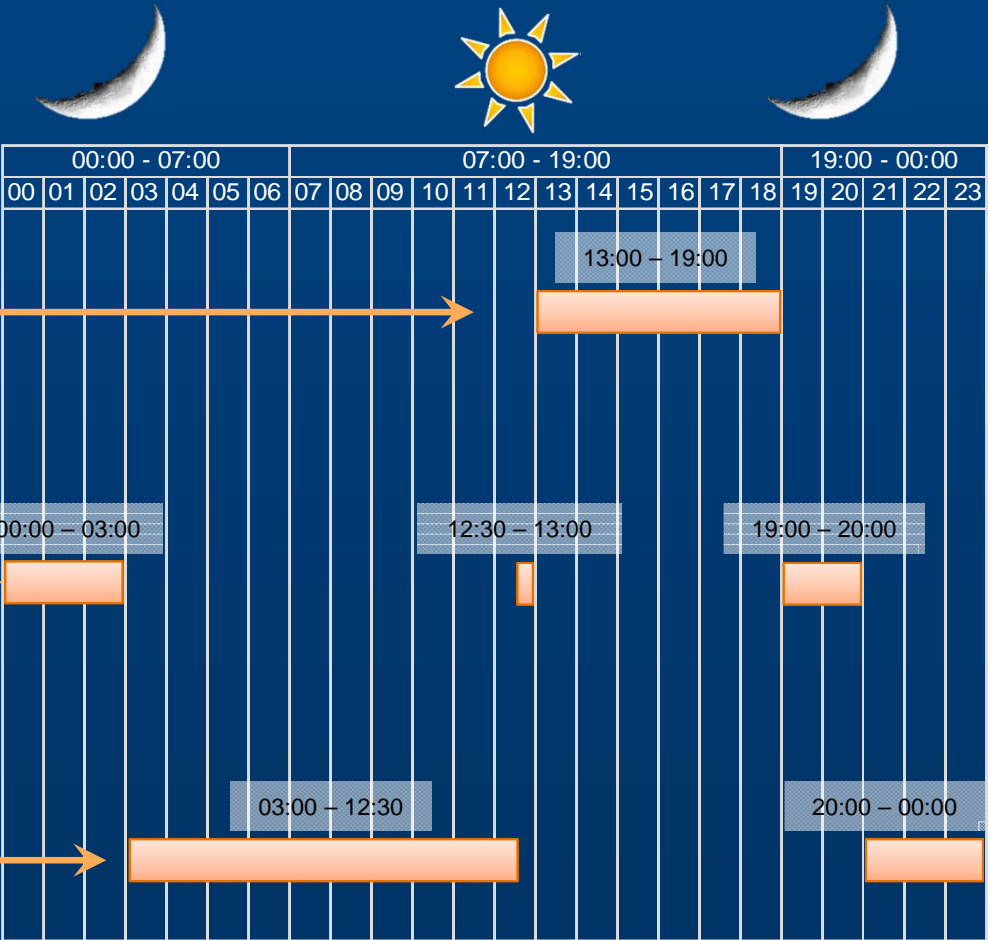
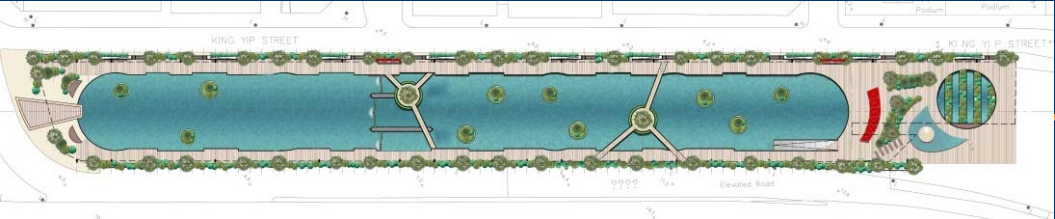
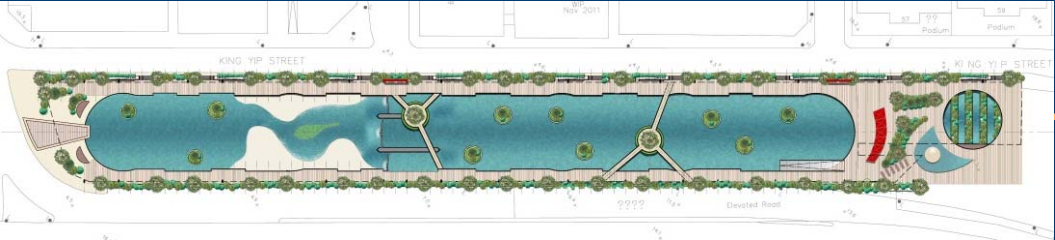
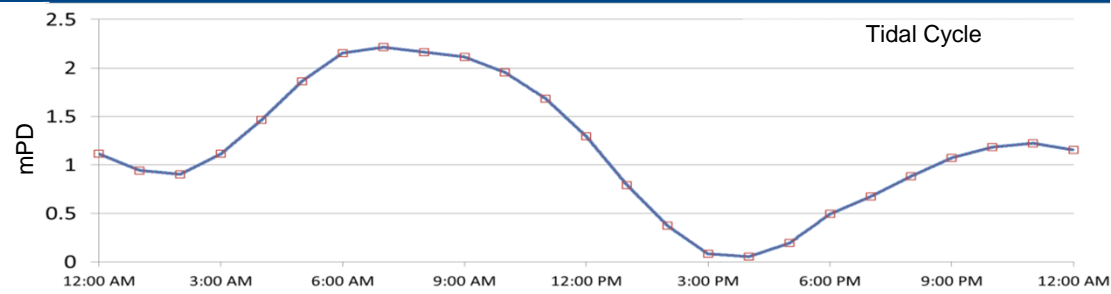
Beautification of Existing Nullah

Conceptual Idea 2 - Water gate

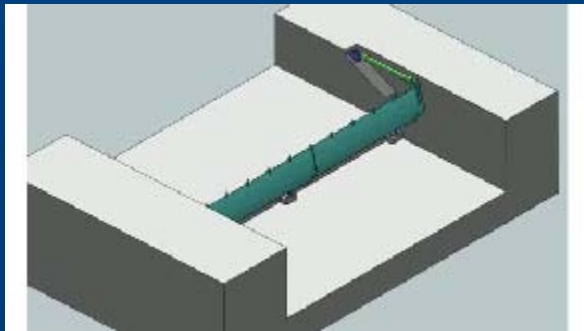
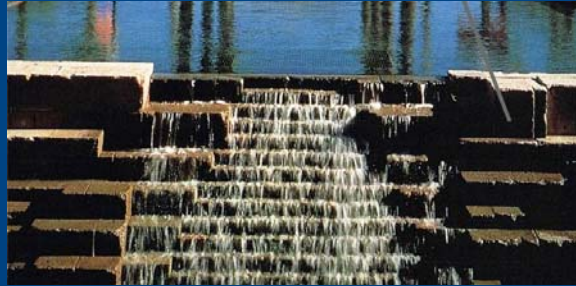


Beautification of Existing Nullah

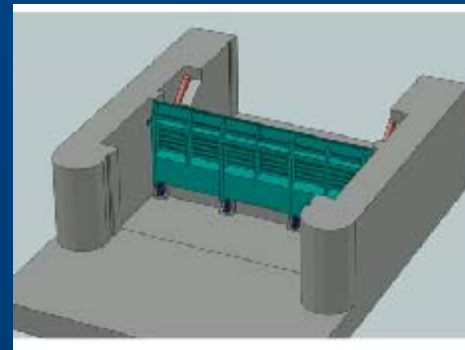
Conceptual Idea 2 - Water gate



Example of Water Gates



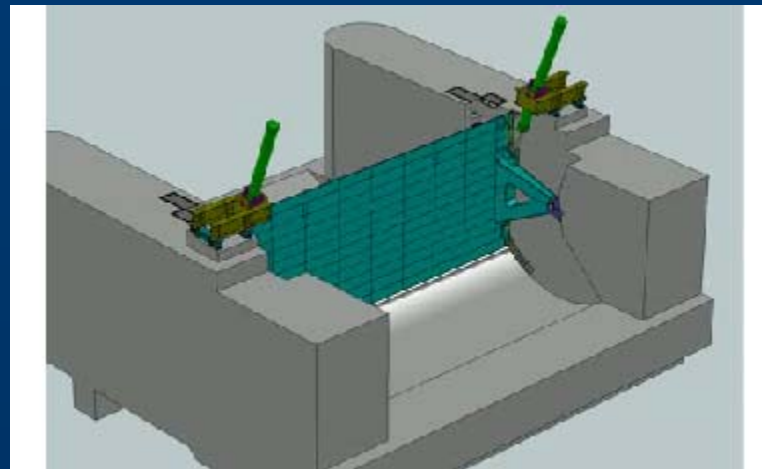
Fishbelly Flap Gate



Tilting Gate

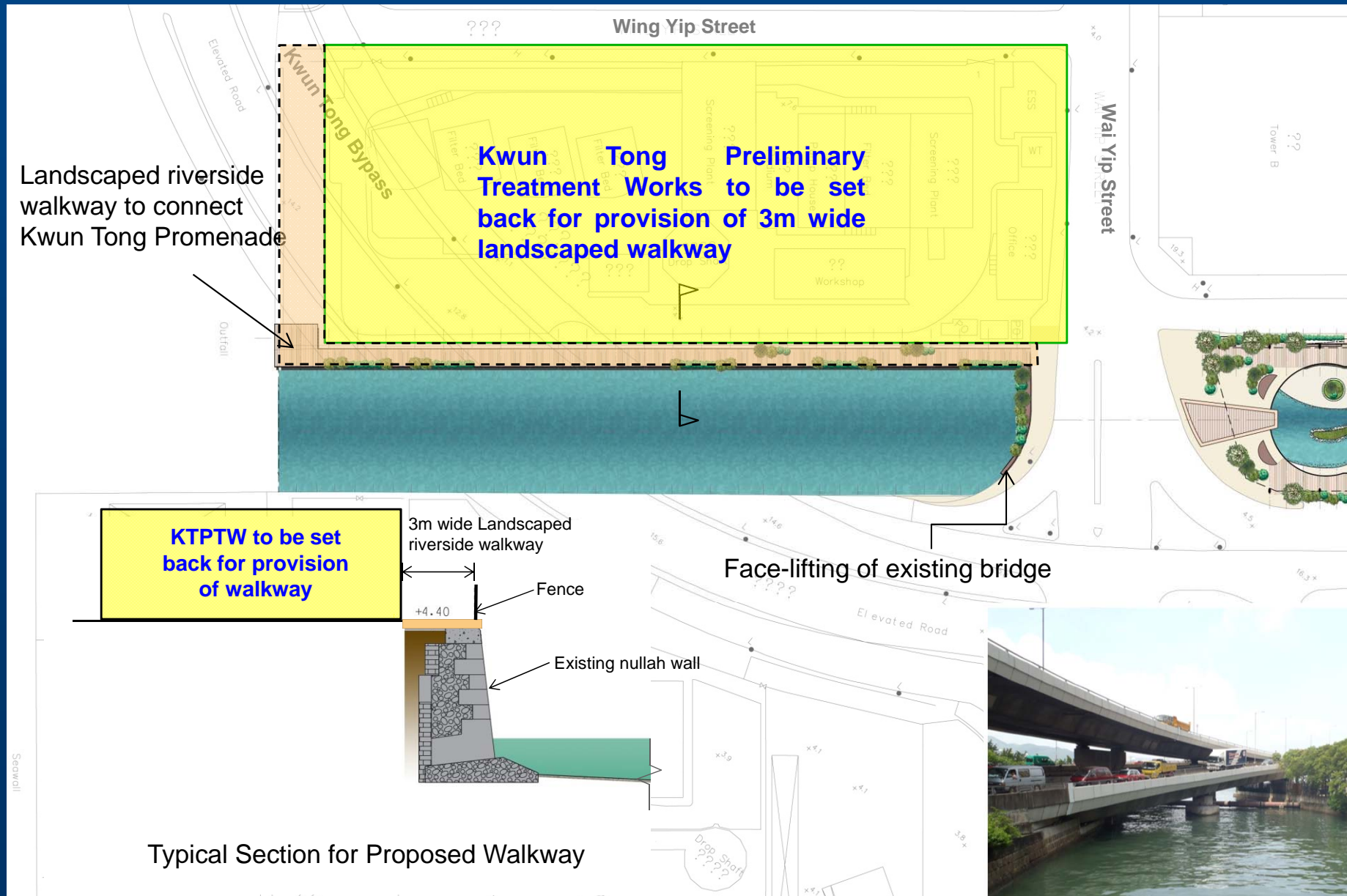


Location of Water Gate

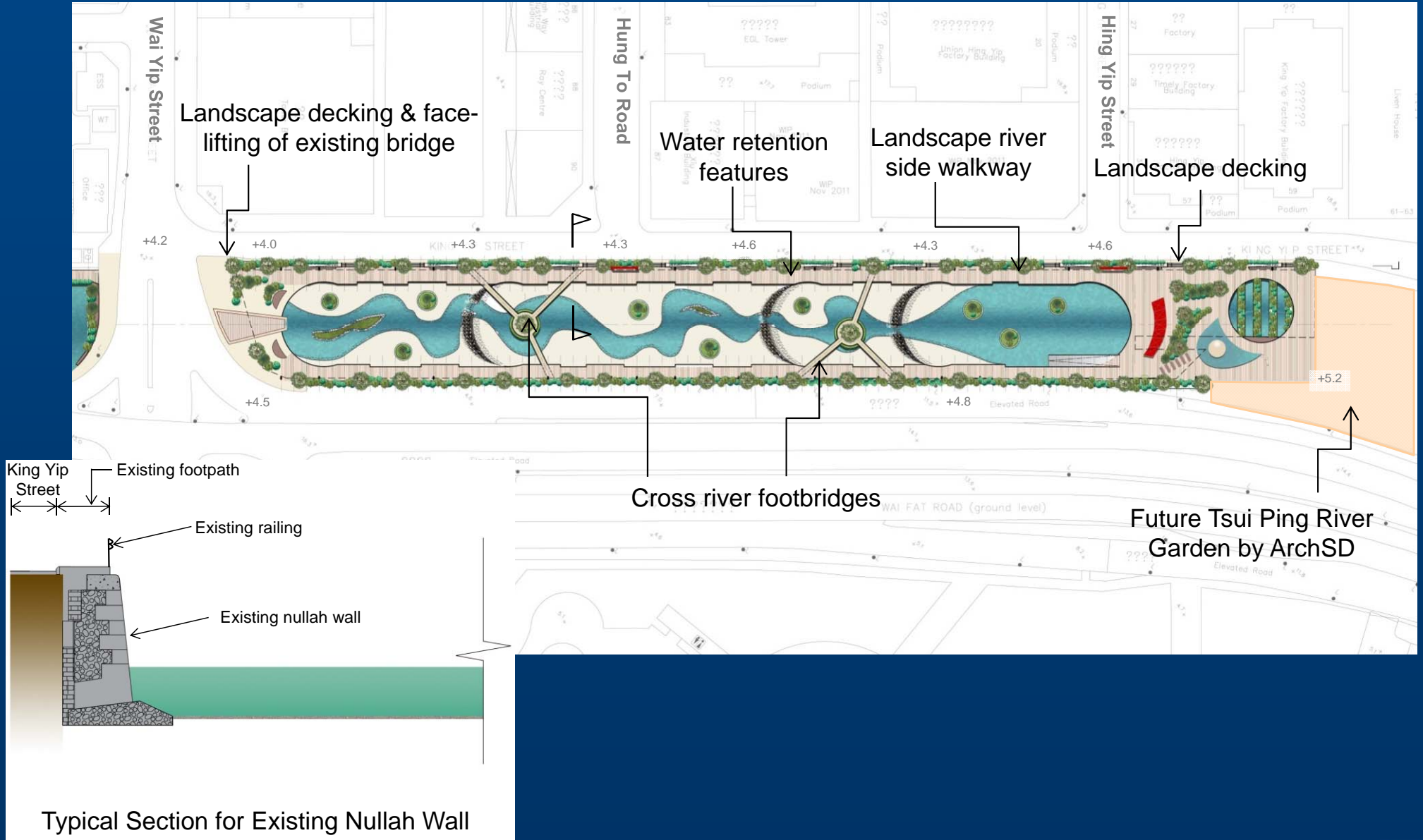


Rising Sector Gate

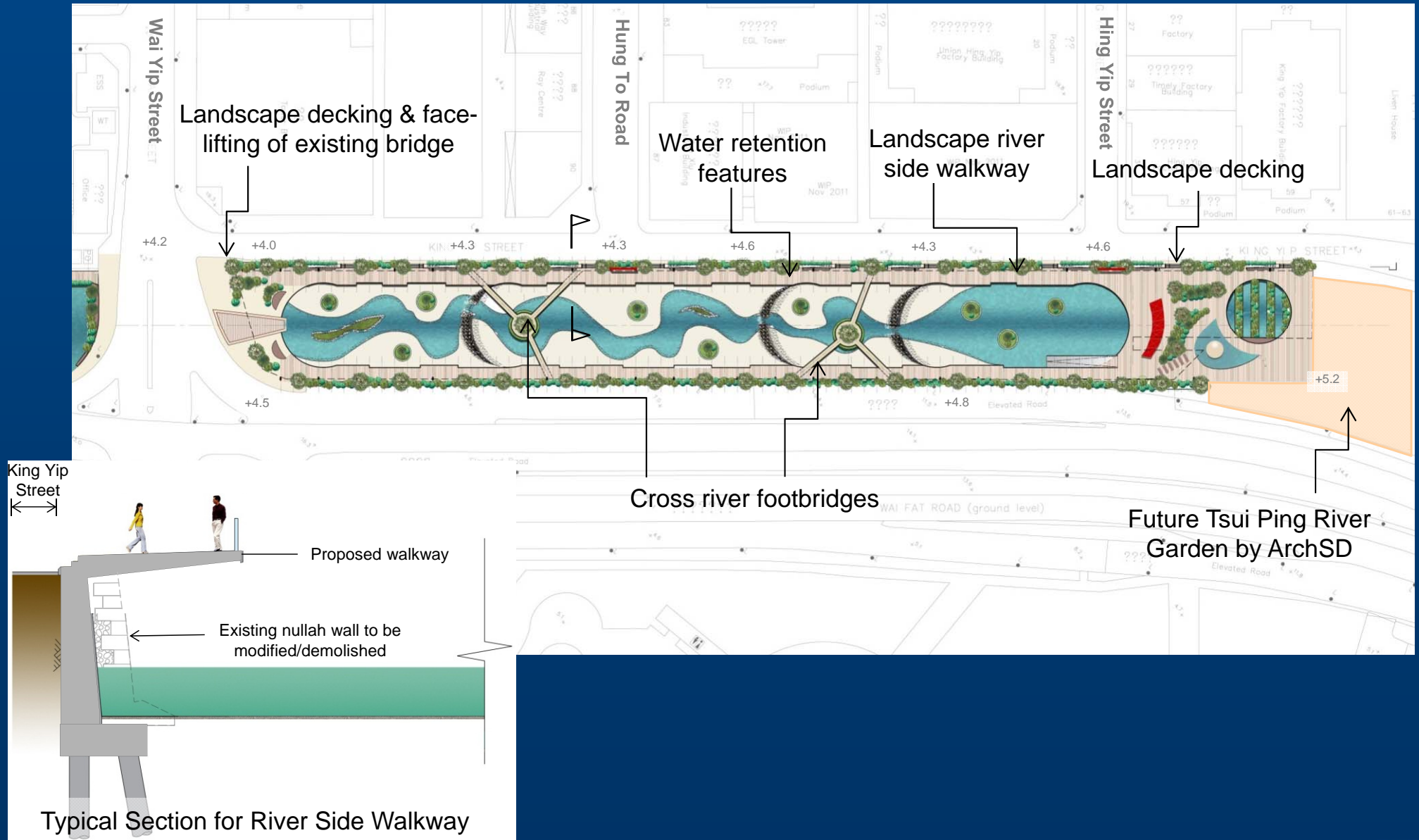
Provision of Landscaped Walkway – **Downstream** of Tsui Ping River



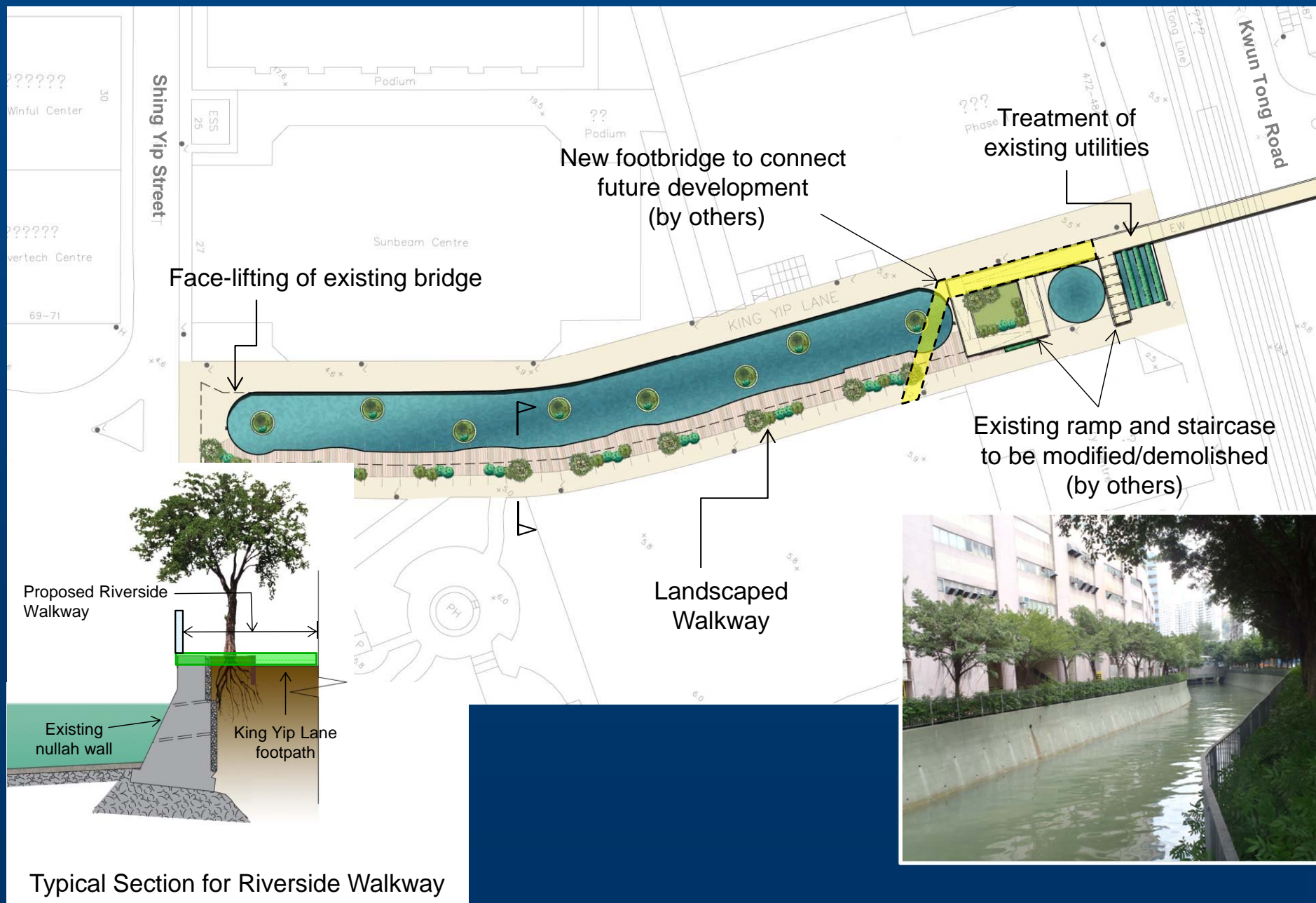
Provision of Landscaped Walkway – Mid-stream of Tsui Ping River



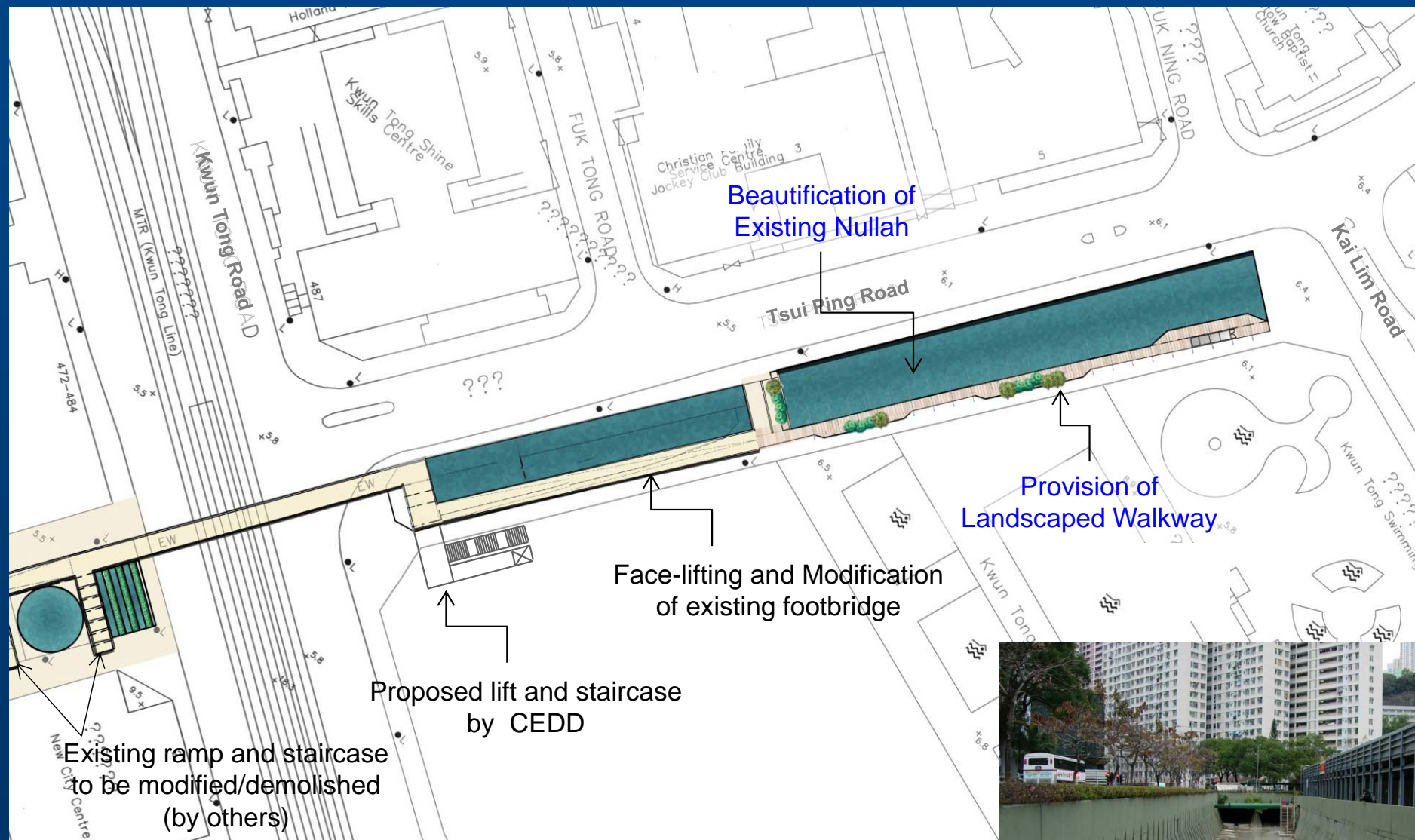
Provision of Landscaped Walkway – **Mid-stream** of Tsui Ping River



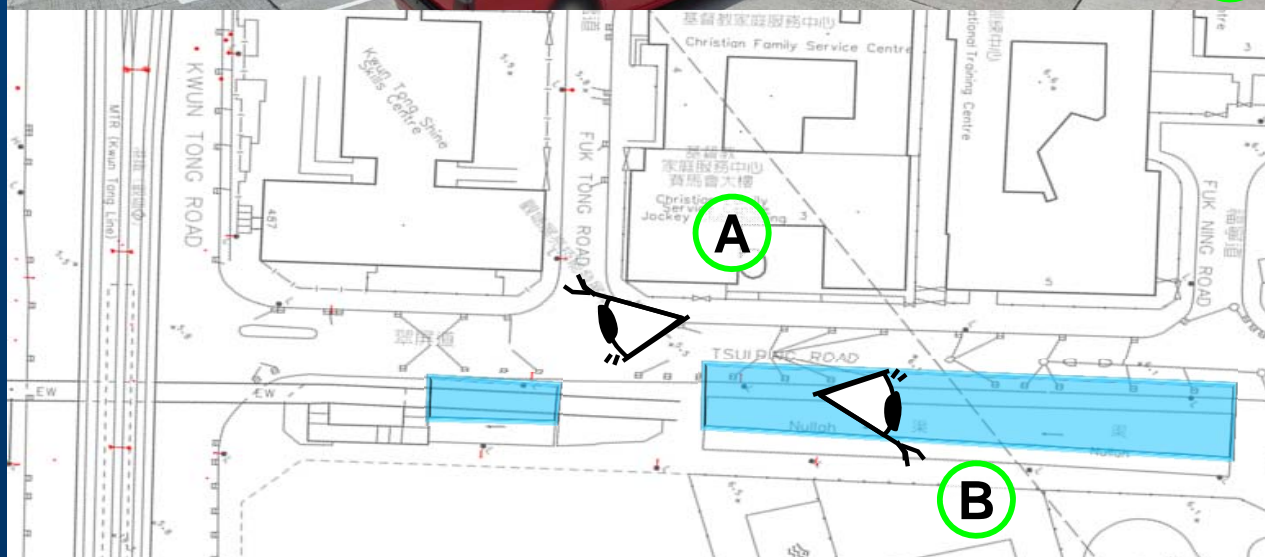
Provision of Landscaped Walkway – **Upstream** of Tsui Ping River (A)



Provision of Landscaped Walkway – **Upstream** of Tsui Ping River (B)



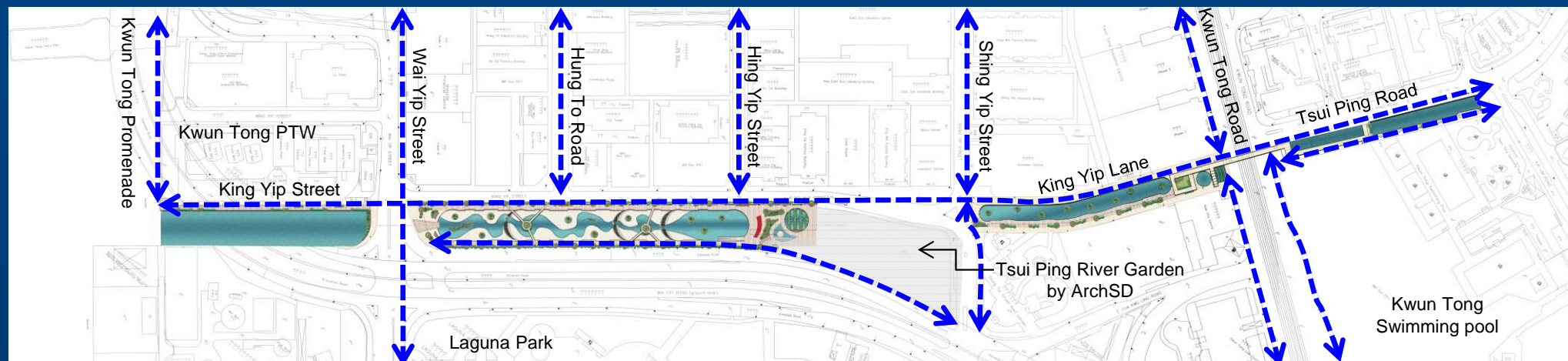
Modification and face-lifting of Kwun Tong Road Footbridge and beautification of utilities crossing over the River



Proposed Enhancement of Pedestrian Walkways

LEGEND

↔ Proposed enhancement of pedestrian walkways



Way Forward

We are now inviting consultants for the investigation assignment under Innovation and Creativity Screening (ICS) Approach, which aims to encourage new ideas for the project. Our target is to commence the investigation assignment in mid-2015 and to carry out the public engagement exercise in late 2016.

Thank You